



MAYA MOUNTAIN NORTH
FOREST RESERVE



Improving Community Livelihoods Through Access to Protected Areas and Integrating Sustainable Use Practices

Christina Garcia

Ministry of Agriculture, Food Security and Enterprise AGM

April 30, 2021

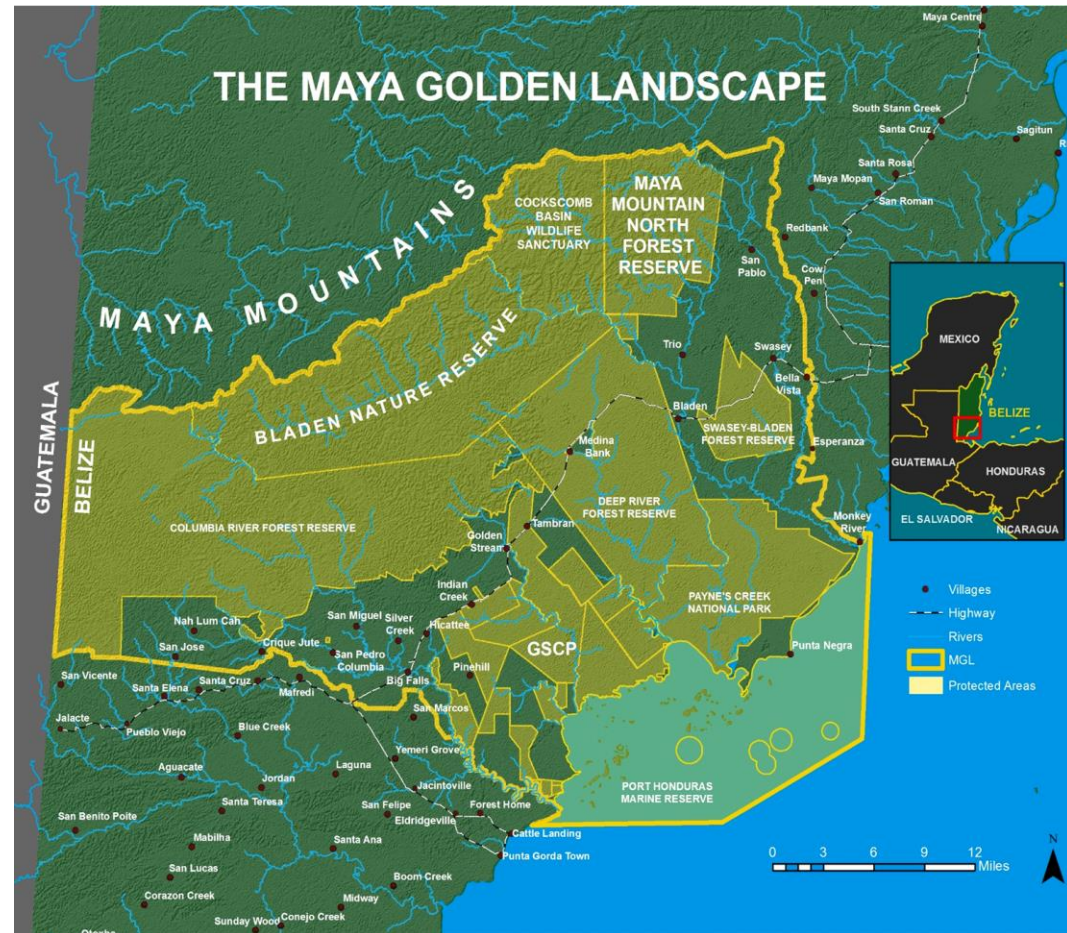


MAYA MOUNTAIN NORTH
FOREST RESERVE

YA'AXCHÉ CONSERVATION TRUST



- Focus on sustainable natural resources use
- Has two main programs: COL and PAM
- COL program focuses on improving the livelihoods of communities through the promotion of economic activities that are sustainable
- PAM Program focuses on enforcement, surveillance, and research and monitoring
- *Harmony between nature and human development for the benefit of both*





MAYA MOUNTAIN NORTH
FOREST RESERVE

OUR STAKEHOLDERS



- Ya'axché works with 10 Mayan Communities (Trio, Bladen, Medina Bank, Golden Stream, Indian Creek, Big Falls, San Miguel, Silver Creek, San Jose and Aguacate)
- Ya'axché works with 80 famers and their families in the MGL
- 21 Beekeepers
- The MGL currently counts with:
 - 22 inga alley cropping demonstration plots
 - 19 model apiaries
 - 20 agroforestry demonstration plots





MAYA MOUNTAIN NORTH
FOREST RESERVE

Partnership with Cooperatives



- 5 main coops/organized group partnerships
 - Marigold Women's Cooperative Society Limited (9 members)
 - Green Creek Farmer's Cooperative (30 members)
 - Aguacate Conservation and Development Committee (12 members)
 - Indian Creek Maya Arts Women's Group (6 members)
 - Trio Farmers Cacao Growers Limited (31 members)





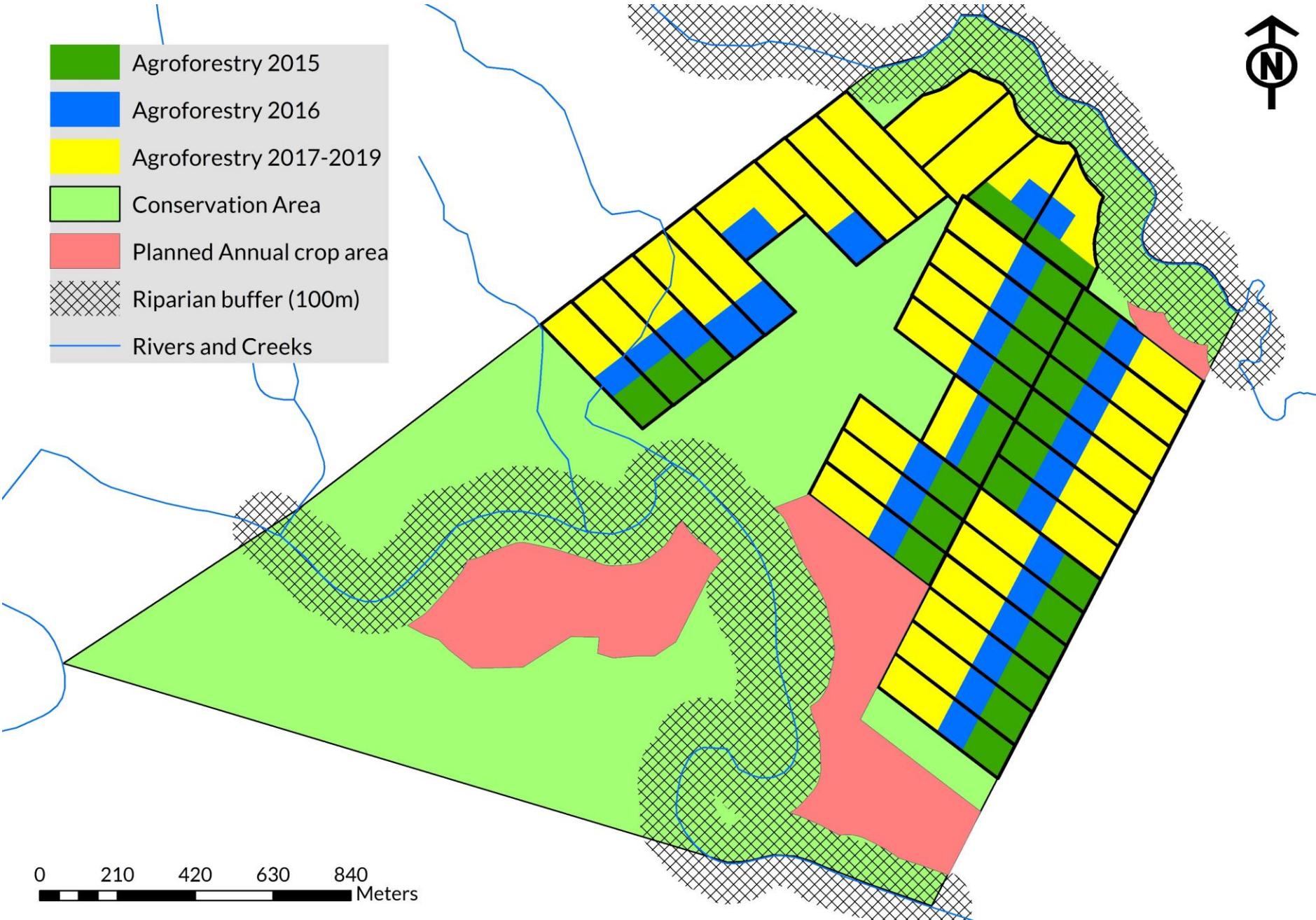
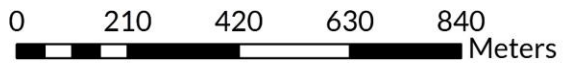
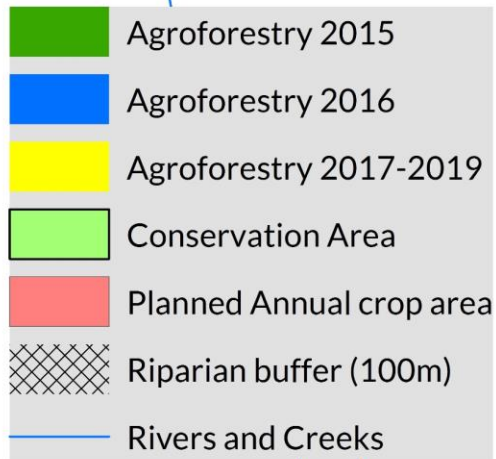
MAYA MOUNTAIN NORTH
FOREST RESERVE

COMMUNITY FORESTRY PARTNER



- A group of 31 Maya farmers who did not have land but needed to provide for their families.
- Worked closely with Ya'axché to acquire an **agroforestry concession** in MMNFR
- TFCGA have regulated access to 936 acres of land within MMNFR
- Land is divided into annual crop section and cacao-based agroforestry section





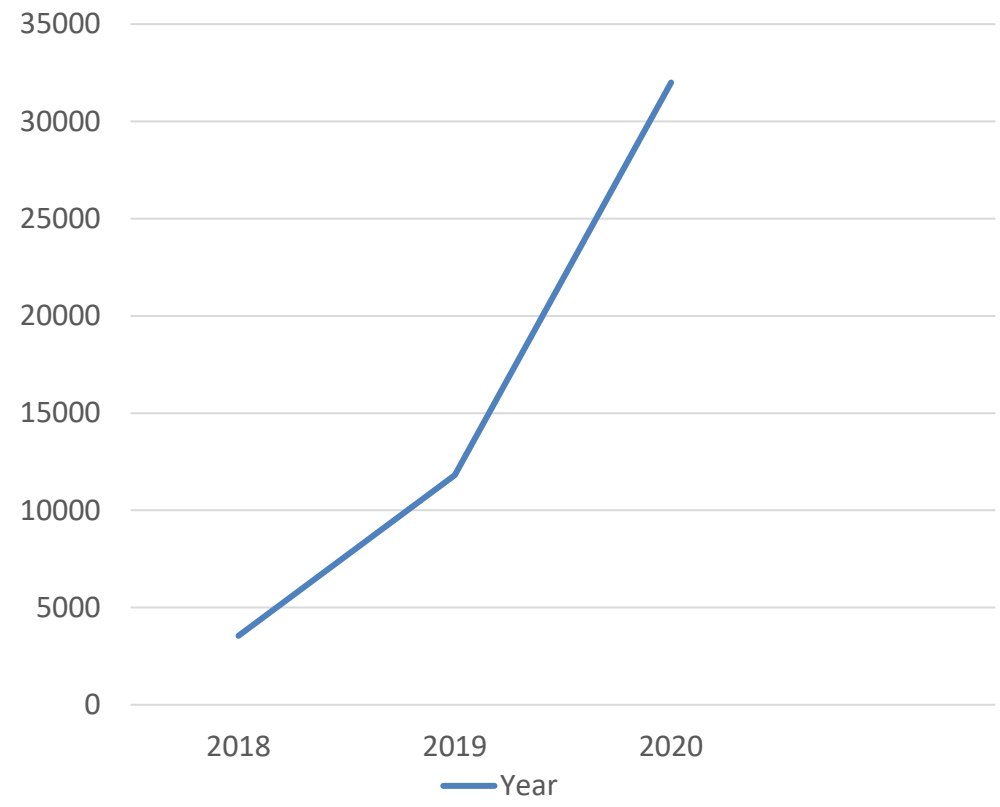


MAYA MOUNTAIN NORTH
FOREST RESERVE



Results

lbs





MAYA MOUNTAIN NORTH
FOREST RESERVE

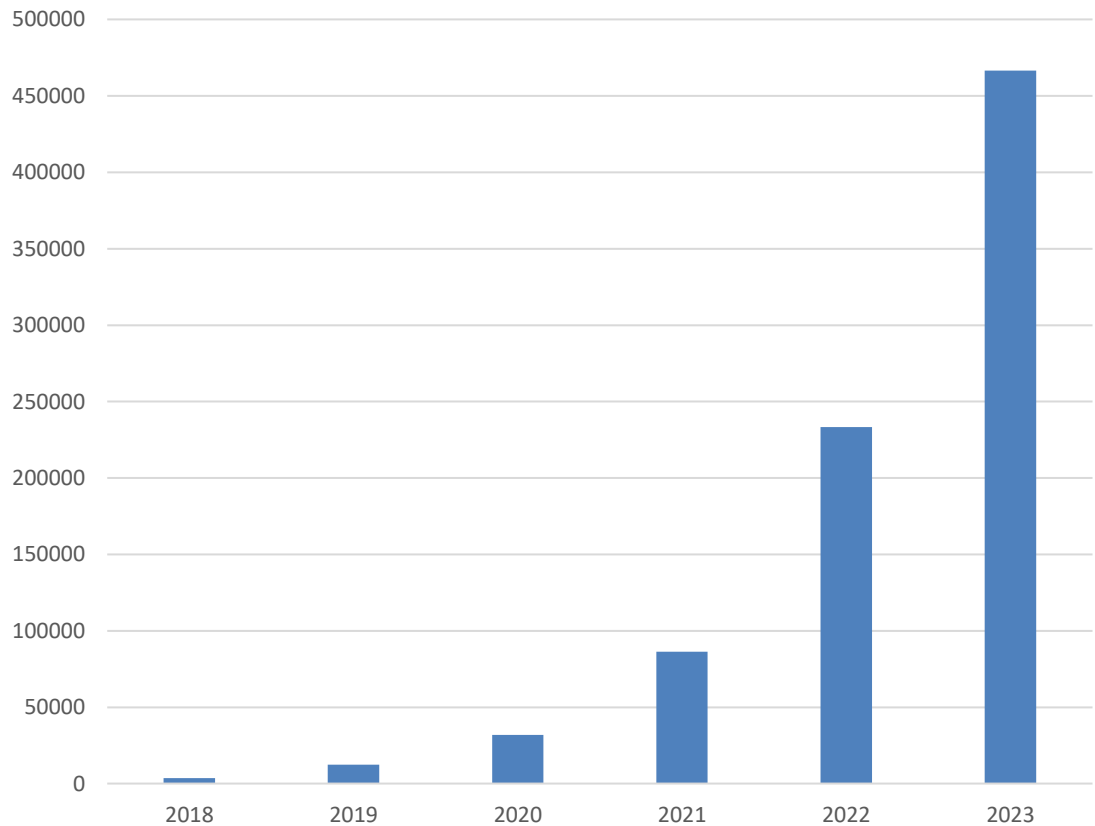


YA'AXCHÉ
CONSERVATION TRUST

Results

Year	Yields
2018	3,550
2019	12,440
2020	32,001
2021	86,400
2022	233,280
2023	466,560

Yields



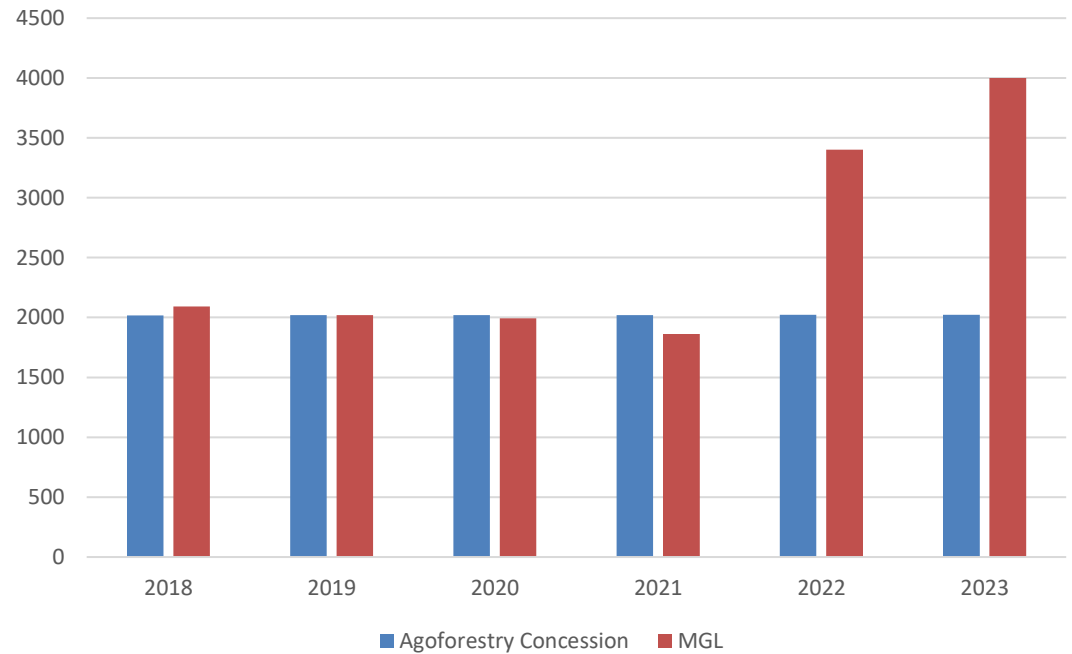


MAYA MOUNTAIN NORTH
FOREST RESERVE



Results

Honey Production in the MGL and Agroforestry
Concession



Year	Yields
2018	2091
2019	2021
2020	1992
2021	1862
2022	3400
2023	4000



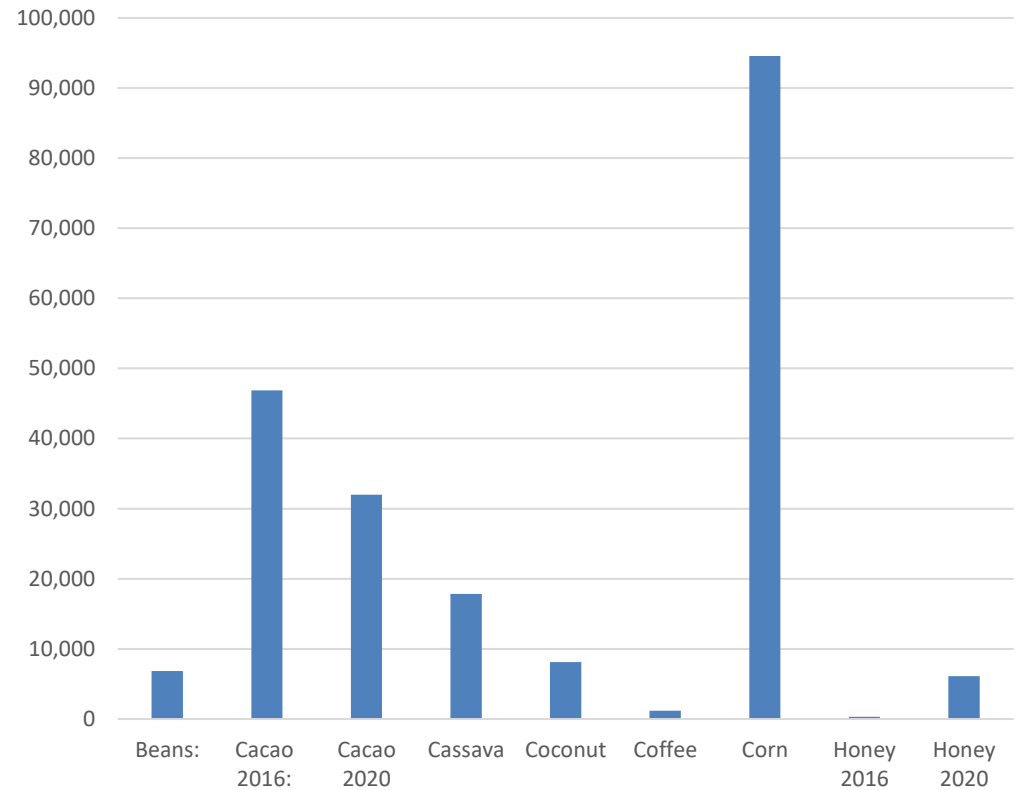
MAYA MOUNTAIN NORTH
FOREST RESERVE

Results



Year	Crops	Pounds
2016	Cacao	46,853
2016	Cassava	17,852
2016	Coconut	8,103
2016	Coffee	1,158
2016	Corn	94,600
2020	Cacao	32,001
2016	Honey	300
2020	Honey	6,104

MGL Farm Products



* Data collected from 49 farmers in the MGL



MAYA MOUNTAIN NORTH
FOREST RESERVE



Successes

- Over 200 capacity building sessions delivered to MGL stakeholders in smart agriculture practices over 5 years
- TFCGA and other stakeholders recognizes that this model is improving their livelihoods
- A sense of resource stewardship developed within the community stakeholders
- Build internal structures for organized group
- Food security and income generation is top priority
- Over 600 acres of land has been converted to agroforestry systems





MAYA MOUNTAIN NORTH
FOREST RESERVE

Way Forward



- Smart agriculture is a top priority, there is still room for improved collaboration with Ministry of Agriculture and key important stakeholders through the use of model farms as a learning tool
- Diversify income sources through value added products such as chocolate making and ecotourism
- Continue empowering local communities to adapt smart agriculture practices
- View farms more as a business rather than a hobby
- Replication of community forest model for improved resource stewardship.
- Improving land use practices while conserving biodiversity
- Improved database repository for agriculture data collection





MAYA MOUNTAIN NORTH
FOREST RESERVE

Thanks!!!

